



# CATALOGO PRIMAVERA 2026

SPRING CATALOGUE





02



## BRANDS

Disco in cialda • Vestibiscotto  
in pasta di zucchero • Decoshape in  
cialda • Soggetti in zucchero  
Decorazioni in blister  
al gusto di cioccolato bianco

### *Brands*

*Wafer discs • Cookie dress • Wafer  
decoshape • Sugar figurines  
White chocolate-flavored decorations  
in blister packs*

24



## SPECIALE MONDIALI 2026

Vestibiscotto  
in pasta di zucchero  
Decoshape in cialda

### *World Cup special*

*Cookie dress • Wafer decoshape*



28



## DECORAZIONI

Macarons • Soft Decor  
Decorazioni in zucchero  
Trasferelli per Pan di Spagna e Frolla

### Decorations

Macarons • Soft Decor  
Sugar decorations  
Transfer sheets for sponge cake  
and shortcrust pastry



48



## LINEA GOLDEN TOUCH

Formato 8x8 • Formato XL  
Giro torta • Mono shape  
Glitter Touch

### Golden Touch line

8x8 size • XL size  
Cake collar • Mono shape  
Glitter Touch



64



## SEMILAVORATI

Linea CreamArt  
Glassa lucida spray

### Semifinished

CreamArt line  
Glossy spray glaze



# Brands

## LICENZE



4



6



10



14

**TEDDY  
FRIENDS**  
By THUN

16

**THUN**

18



**SONIC**™  
**THE HEDGEHOG**



**Disco in cialda - Wafer disc**

**41312** NEW

cm: Ø21 - pz: 12 - mat: AM - (AZO)



**Vestibiscotti in pasta di zucchero**  
**Cookie dress**

**41314** NEW

■■■ 6 - cm: Ø5,8 - pz: 12BlisterA4 (12pz) - mat: ZU - (GF)



**Decoshape - Wafer decoshape**

**41313** NEW - ■■■ 10 - cm: H5,5

pz: 600 - mat: AM - (AZO)

©SEGA



©SEGA



# CARE BEARS™



**Decorazioni in blister  
al gusto di cioccolato bianco**

*White chocolate-flavored decorations  
in blister packs*

**40140** NEW - ■■■ 8 - 4,6g - cm: H max 5,2

pz: 64 - mat: SURR.BCO - (GF)



**Disco in cialda - Wafer disc**



**40143** NEW

cm: Ø21 - pz: 12

mat: AM - (GF)



**Soggettini in zucchero**  
*Sugar figurines*

20145 **NEW** - ■■■ 4 - cm: H max 7 - pz: 24 - mat: GE/ZU -  





# CARE BEARS™

Vestibiscotti in pasta di zucchero  
Cookie dress



40141 **NEW**

■ ■ ■ 6 - cm: Ø5,8

pz: 12BlisterA4 (12pz)

mat: ZU -



Decoshape - Wafer decoshape

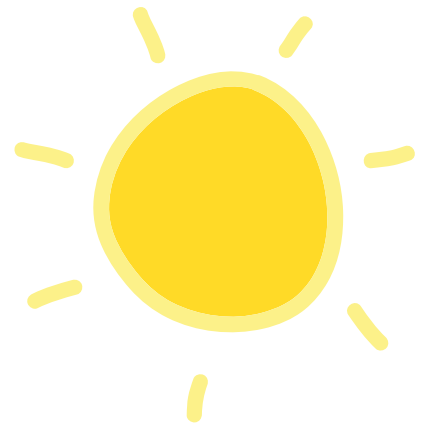
40142 **NEW** - ■ ■ ■ 8 - cm: H5,5

pz: 600 - mat: AM -





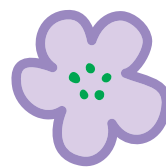
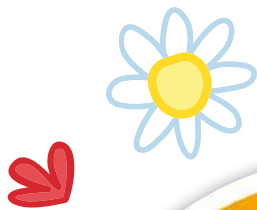
Peppa Pig<sup>TM</sup>



**Soggettini in zucchero**  
*Sugar figurines*

**20146** NEW - ■■■ 5 - cm: H max 8 - pz: 25

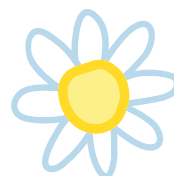
mat: GE/ZU -



**Disco in cialda - Wafer disc**

**40229** NEW

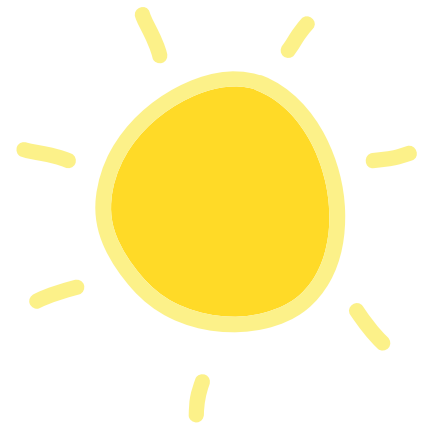
cm: Ø21 - pz: 12 - mat: AM -







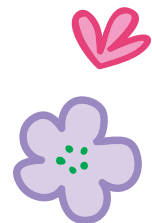
# Peppa Pig™



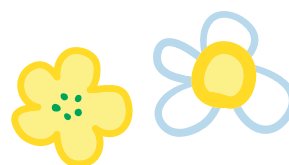
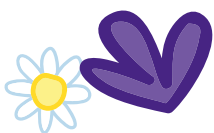
**Decoshape - Wafer decoshape**

**40230** NEW - ■■■ 8 - cm: H5,5

pz: 600 - mat: AM -



**Soggettini in zucchero**  
*Sugar figurines*



**20127** - cm: H5 - pz: 30

mat: GE/ZU -

Vestibiscotti in pasta di zucchero  
Cookie dress



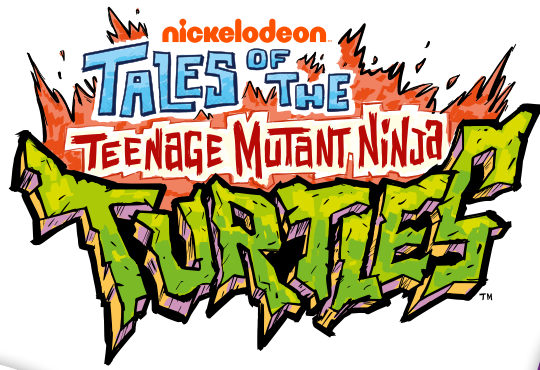
40231 **NEW**

■ ■ ■ 6 - cm: Ø5,8

pz: 12BlisterA4 (12pz)

mat: ZU - 





**Disco in cialda - Wafer disc**

40121 switch ⇨ 41112 NEW

cm: Ø21 - pz: 12 - mat: AM -



**Decoshape  
Wafer decoshape**

40122 NEW - ■■■ 4 - cm: H5,5

pz: 600 - mat: AM -

**Soggettini in zucchero  
Sugar figurines**



40346 - ■■■ 4 - cm: H6 - pz: 24 - mat: GE/ZU -



Vestibiscotti in pasta di zucchero  
Cookie dress



40120 **NEW** - ■■■ 4 - cm: Ø5,8 - pz: 12BlisterA4 (12pz) - mat: ZU -



# TEDDY FRIENDS

By THUN



**Disco in cialda - Wafer disc**

**41307** NEW

cm: Ø21 - pz: 12 - mat: AM -



**Decoshape - Wafer decoshape**

**41306** NEW - ■■■ 5 - cm: H5,5

pz: 600 - mat: AM -



**Vestibiscotti in pasta di zucchero  
Cookie dress**



**41308** NEW

■■■ 6 - cm: Ø5,8

pz: 12BlisterA4 (12pz)

mat: ZU -



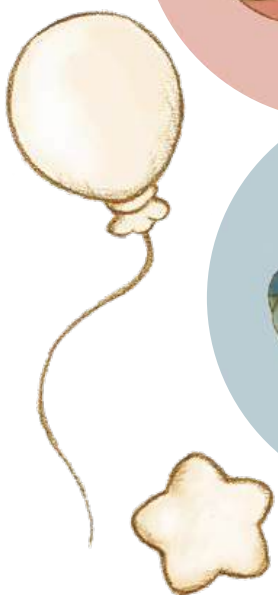
# THUN

## Vestibiscotti

Cookie dress • Produkty gotowe do sprzedaży • Vorgestanztes Zuckerpapier  
Vistegalleta • Veste bolacha



41309 **NEW** - ●●● A - ■■■ 6 - cm: Ø6,5~  
pz: 12BlisterA4 (12pz) - mat: ZU -



# Soggettini in zucchero

Sugar figurines • Figurki cukrowe • Zuckerfiguren  
Figuras de azúcar • Bonequinhos de açúcar



# THUN

## Ciocolato chablon

Thin Chocolate Plaques • Gotowe czekoladowe plakiety  
Gebrauchsfertige Schokoladendekore • Decoraciones de  
chocolate superfino • Decorações de chocolate finas



41310 **NEW** - ■■■ 4 - ◆ - cm: Ø6 - pz: 110 - ©


love

# Decorazioni in zucchero

Sugar decorations • Dekoracje cukrowe • Zuckerdekore  
Decoraciones de azúcar • Decorações em açúcar



41303 **NEW** - ■■■ 2 - cm: H5/5,5

pz: 12 - mat: ZU - 



# THUN

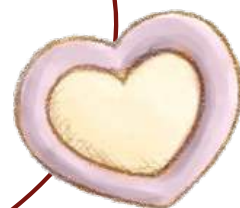
## Decorazioni in zucchero

Sugar decorations • Dekoracje cukrowe • Zuckerdekore  
Decoraciones de azúcar • Decorações em açúcar



**41305** NEW

cm: H6 - pz: 12 - mat: ZU -

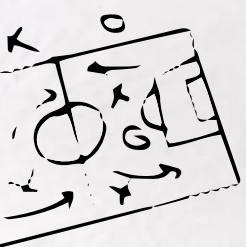
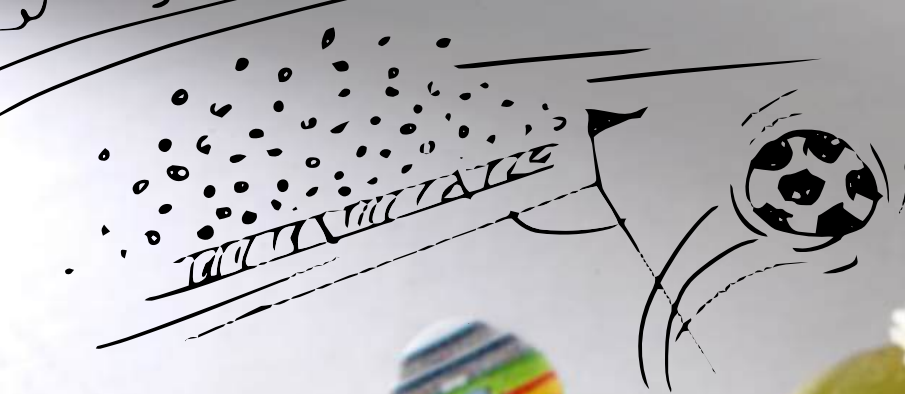


**41311** NEW - ■■■ 3

cm: L8,5xH5,5 - pz: 36 - mat: ZU -







25





# Mondiali 2026

2026 World Cup • Mistrzostwa Świata 2026  
Weltmeisterschaft 2026 • Mundial 2026

**Vestibiscotti in pasta di zucchero**  
Cookie dress

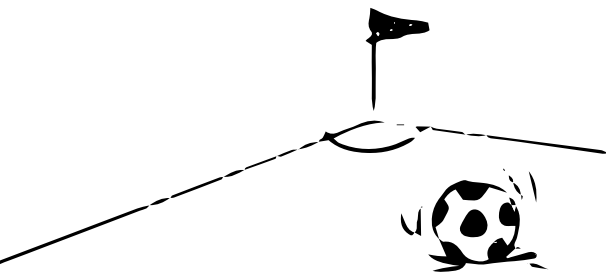


**11400** NEW

6 - cm: Ø5,8

pz: 12BlisterA4 (12pz)

mat: ZU -



**Decoshape - Wafer decoshape**

**11410** NEW - 5 - cm: H5,5 - pz: 600 - mat: AM -



# Pronto a tifare?

ready to cheer?



**25110** - pz: 16Kit (9pz) - mat: PL ©



**25000**

pz: 24Kit (2pz) - mat: PL ©



**Sacchetto richiudibile**

*Resealable bag*



**Facile da dosare**

*Easy dosing*



**Decorazione in cialda - Wafer decoration**

**25687L** - pz: 1 (250g) - mat: AM





DECORATIONS  
*Decorazioni*

**30** Macarons & Mini macarons  
Macarons & Mini macarons

**38** Soft decor  
Soft decor



**40** Decorazioni in zucchero  
Sugar decorations



**44** Trasferello per pan di spagna e frolla  
Transfer sheet for sponge cake and shortcrust pastry

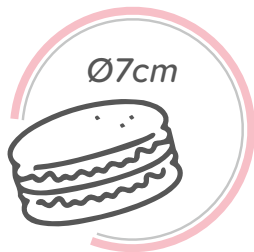


# Macarons

Con mandorle • With almonds • Z migdałami • Mit Mandeln  
Con almendras • Com amêndoas

colore neutro  
*nuova dimensione*

Neutral color, new size

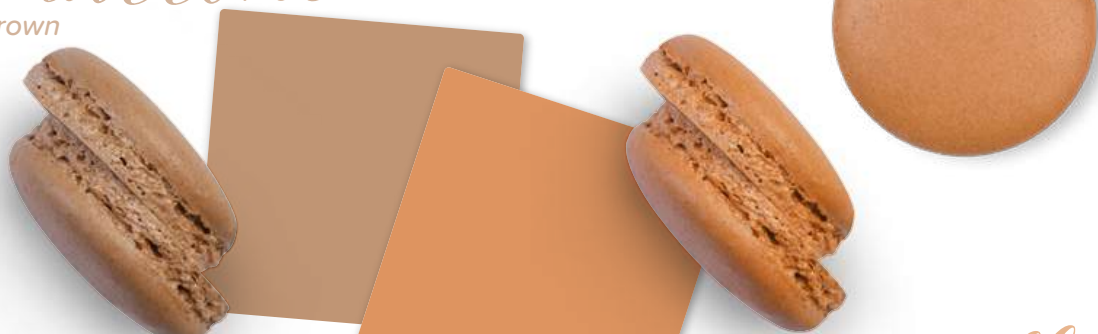


20347 **NEW** - cm: Ø7

pz: 48 - mat: PF -



*marrone*  
brown



20348 **NEW**

■ ■ ■ 2 - cm: Ø3,5 - pz: 192 - mat: PF -

*caramello*  
caramel

*verde*  
green



20353 **NEW** -



*azzurro*  
light blue



20349 **NEW** -

*rosa*  
pink



# Macarons

Con mandorle • With almonds • Z migdałami • Mit Mandeln  
Con almendras • Com amêndoas



**20333** - ■■■ 4  
cm: Ø3,5 - pz: 384  
mat: PF -

## COLORI *Autunno* Autumn colours



96pz



96pz



96pz



96pz



**20409** - ■■■ 4  
cm: Ø3,5 - pz: 384  
mat: PF -

## COLORI *Vivaci* Bright colours



96pz



96pz



96pz



96pz


# Mini Macarons

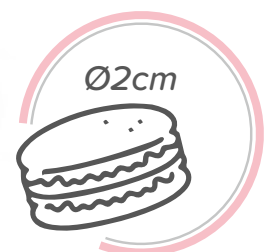
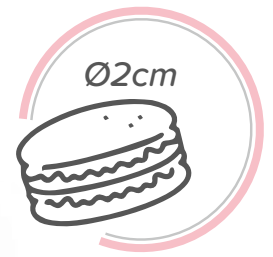
Con mandorle • With almonds • Z migdałami • Mit Mandeln • Con almendras • Com amêndoas

## Colori Autunno

Autumn colours

20408 ■■■ 4


cm: Ø2 - pz: 400 - mat: PF - 



## Colori Vivaci

Bright colours

20407 ■■■ 4

cm: Ø2 - pz: 400 - mat: PF - 



# Macarons

Con mandorle • With almonds • Z migdałami • Mit Mandeln  
Con almendras • Com amêndoas

## Colori Singoli

Single colours



20309Z - cm: Ø3,5 - pz: 192 - mat: PF - (AZO)



20309E - (AZO)



20309B - cm: Ø3,5 - pz: 384 - mat: PF - (AZO)



20309N - (AZO)



20309G - (AZO)



20309C - (AZO)



20309L - (AZO)

Un macaron, infiniti colori.  
Crea il colore che vuoi con *ColorSpray!*



*One macaron, endless colors.  
Create the shade you want with ColorSpray!*




# Macarons

Con mandorle • With almonds • Z migdałami • Mit Mandeln  
Con almendras • Com amêndoas




**20341** - cm: L4,5 - pz: 132

mat: PF - 



**20327** - 



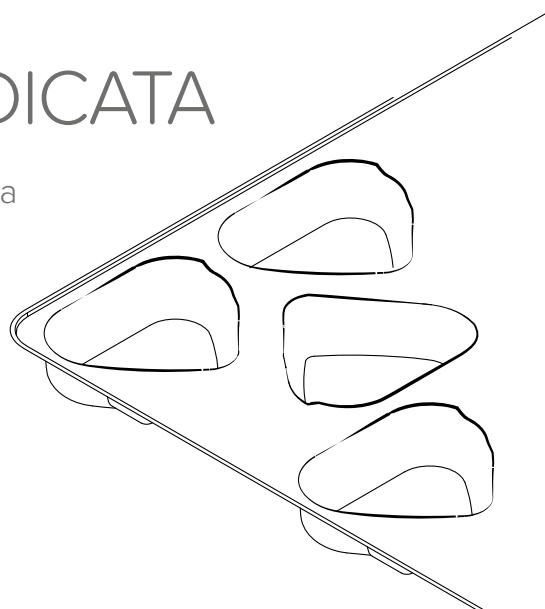
**20335** - 

## *Nuovo pack* con VALVA DEDICATA

Grazie alla nuova valva in materiale plastico offriamo una soluzione **semplice e sicura** per il trasporto

*New packaging with dedicated valve*

*Thanks to the new plastic valve, we offer a simple and safe solution for transportation*





Eleganti macarons a forma di  
*cuore*  
per festeggiare le persone che ami!

*Elegant heart shaped macarons to celebrate the ones you love*



# Soft decor


## DECORAZIONI IN ZUCCHERO E GELATINA

Sugar and jelly decorations • Dekoracje cukrowe oraz żelowe  
Dekorationen aus Zucker und Gelee • Decoraciones de azúcar y gelatina  
Decorações de açúcar e goma



*limone*  
lemon



23434 - cm: L3,8 - pz: 96 - mat: GE/ZU - 

Colori vibranti,

*texture morbida*  
con dettagli perfetti!

Soft Decor: **vibrant colours**, soft texture, with perfect details.



*fragola*  
strawberry



23435

cm: L2,7xH3 - pz: 96 - mat: GE/ZU - 





# Decorazioni in zucchero

Sugar decorations • Dekoracje cukrowe • Zuckerdekore  
Decoraciones de azúcar • Decorações em açúcar



100g

21108 [switch](#) ⇨ 19379 **NEW**

cm: Ø0,3/0,5/0,7/10 - g: 100  
pz: 1 - mat: ZU -



21110 [switch](#) ⇨ 19378 **NEW**

21114 [switch](#) ⇨ 19377 **NEW**



21109 [switch](#) ⇨ 19380 **NEW**

21113 [switch](#) ⇨ 19383 **NEW**





# Decorazioni in zucchero

Sugar decorations • Dekoracje cukrowe • Zuckerdekore  
Decoraciones de azúcar • Decorações em açúcar





**21112C** NEW - GF AZO



**21112L** NEW - GF



**21112E** NEW - GF



**21112G** NEW - GF AZO



**21112B** NEW - cm: Ø0,9 - kg: 1 pz: 1  
mat: ZU - GF



New pack



**21117** switch ⇨ **19382** NEW

cm: Ø0,3 - g: 100 - pz: 1 - mat: ZU - GF



**21116** switch ⇨ **19381** NEW

GF AZO





# Trasferello per pan di spagna e frolla

Transfer sheet for sponge cake and shortcrust pastry

## stampa SFORNA... e sorprendi!

Print, Bake & Impress:



**82068** NEW - cm: L30xH40 - pz: 12 -



**82069** NEW - ■■■ 2 - cm: L30xH40 - pz: 24 -



**82071** NEW - ■■■ 2 - cm: L30xH40 - pz: 24 -

### SEMPLICE DA USARE, UNICO DA VEDERE

Simple to use, unique to look at



**RITAGLIA**  
CUT



**POSIZIONA**  
PLACE



**CUOCI**  
BAKE

**E LA GRAFICA SI  
TRASFERISCE IN MODO  
PERFETTO su  
PAN DI SPAGNA E FROLLA**



**Scopri quanto è semplice  
da usare scannerizzando  
il QR code!**

Find out how easy it is to use  
by scanning the QR code!

Cut, place, bake... and **the design transfers perfectly** onto sponge cake and shortcrust pastry





# Trasferello per pan di spagna e frolla

Transfer sheet for sponge cake and shortcrust pastry

## CREATIVITÀ PRONTA DA CUOCERE! STILE INSTANTANEO, EFFETTO *wow*

Creativity ready to bake! Instant style, wow effect



**82070** **NEW** - cm: L30xH40 - pz: 12 - GF



**82060** **NEW** - GF



**82061** **NEW** - GF

### SEMPLICE DA USARE, UNICO DA VEDERE

Simple to use, unique to look at



**RITAGLIA**  
CUT

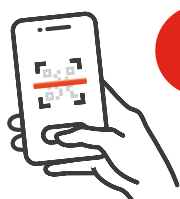
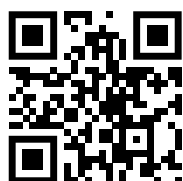


**POSIZIONA**  
PLACE



**CUOCI**  
BAKE

**E LA GRAFICA SI  
TRASFERISCE IN MODO  
PERFETTO su  
PAN DI SPAGNA E FROLLA**



**Scopri quanto è semplice  
da usare scannerizzando  
il QR code!**

Find out how easy it is to use  
by scanning the QR code!

Cut, place, bake... and **the design transfers perfectly** onto sponge cake and shortcrust pastry





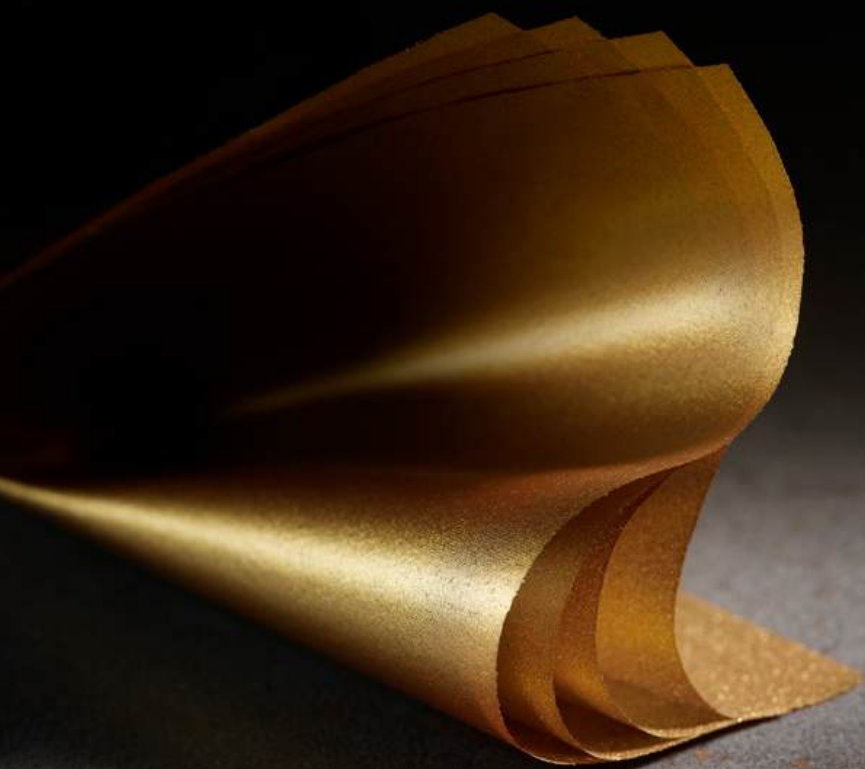
Grazie alla **tecnologia esclusiva** di Golden Touch abbiamo creato **qualcosa di straordinario** per voi.

Rivoluziona il tuo concetto di lusso con nuovi prodotti dall'estetica **senza precedenti**

*Thanks to the exclusive technology of Golden Touch we've created something extraordinary for you.  
Revolutionize your concept of luxury with an extraordinary aesthetic performance.*



SCOPRI DI PIÙ  
*Discover more*



NUOVE FORME,  
*infinito* SPLENDORE



*Distinctive shapes, endless brilliance*



  
Moddecor  
*Golden Touch*



### **Osa con infinite applicazioni!**

Utilizzalo su cioccolato, prodotti da forno (prima o dopo la cottura), pasta di zucchero, glassa e gelatina, gelato e persino sui piatti Ho.Re.Ca

*Dare to explore infinite applications! Use it on chocolate, baked goods (before or after baking), sugar paste, glaze and jelly, ice cream, and even on Ho.Re.Ca. dishes.*





31400 - cm: L8

pz: 45 -   

# formato 8x8

8x8 size



Fogli quadrati perfetti per **ricoprire piccole superfici** o per creare scaglie, fiocchi o briciole da utilizzare su cioccolato e dolci mignon.

*Our square sheets are perfect to **cover small surfaces** or creating flakes, chips, or crumbs to use on chocolate and miniature pastries.*



FAI *risplendere*  
LE TUE CREAZIONI

formato **XL**

*XL size*

**31401**

cm: H28,6xL20

pz: 12 - GF AZO

**31426** NEW

cm: H28,6xL20 - pz: 8 - GF AZO

Ideale per **ricoprire superfici ampie** come torte da cerimonia, oppure come decorazione delle vaschette di cremino in gelateria, fino ad arrivare a prodotti da forno e grandi lievitati.

*It is perfect to **cover large surfaces** such as wedding cakes, or to decorate your Cremino, as well as baked products and large leavened products.*





# Linea Golden Touch

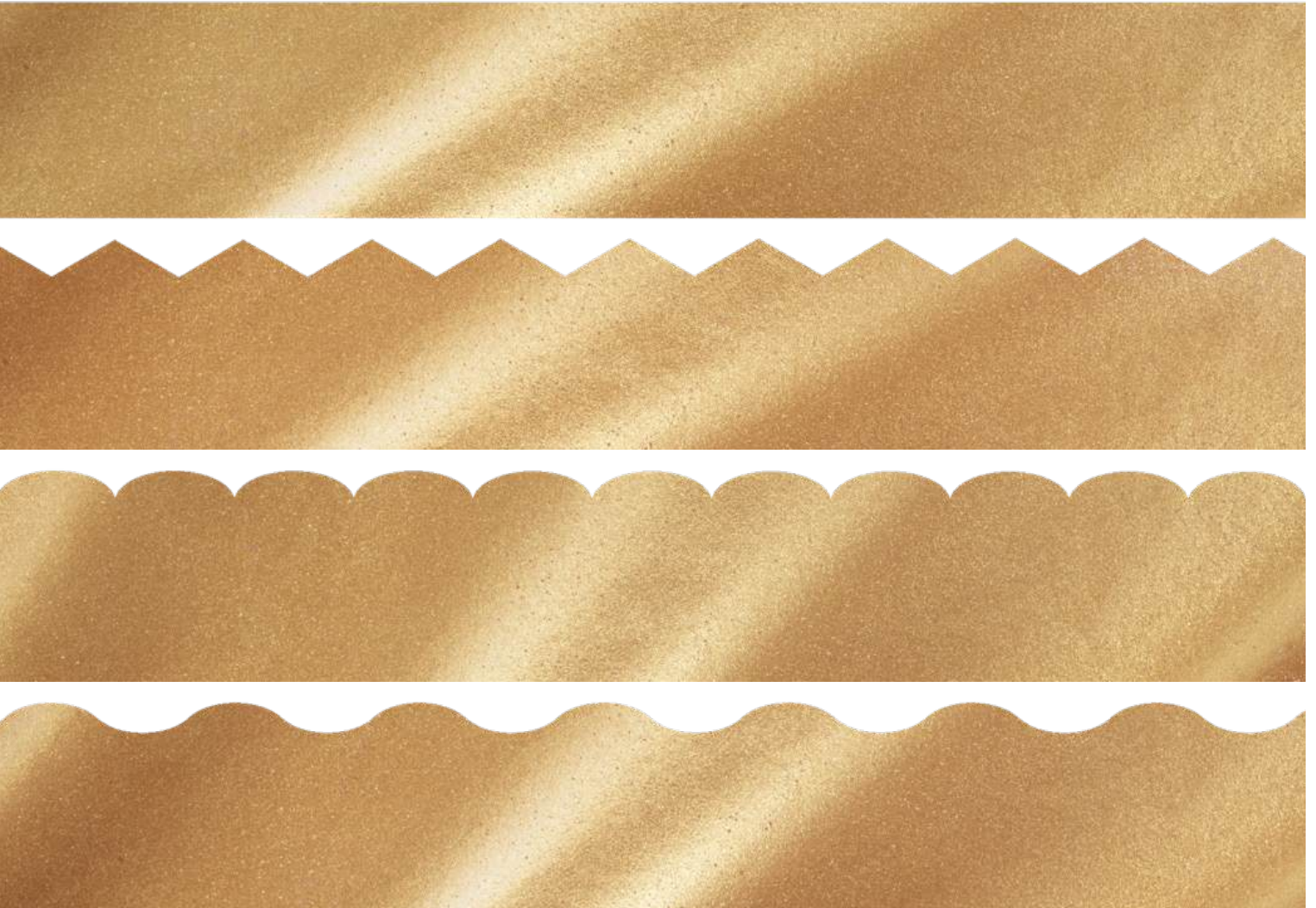
Golden Touch line • Linia Golden Touch • Golden Touch Linie  
Línea Golden Touch • Linha Golden Touch

## Girotorta

*Cake collar*




Il formato che **abbraccia e avvolge** il tuo dessert

The shape that **embraces and wraps** your dessert



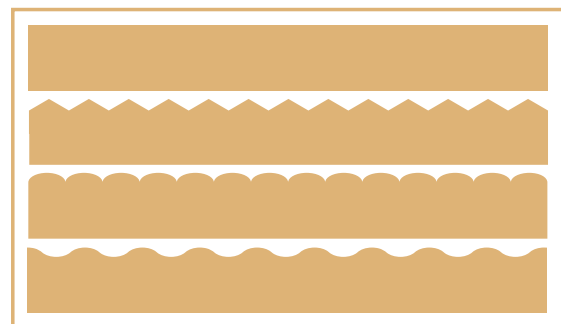
**Assortito**  
*Assorted*

**31418** - ■■■ 4

cm: L26xH3,3 - pz: 48 -   

1 conf.= 4pz x 12 fogli

1 pack = 4pcs x 12 sheets

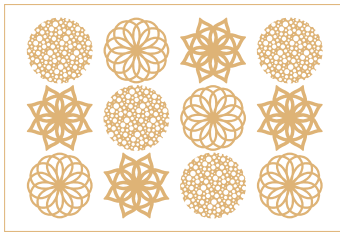
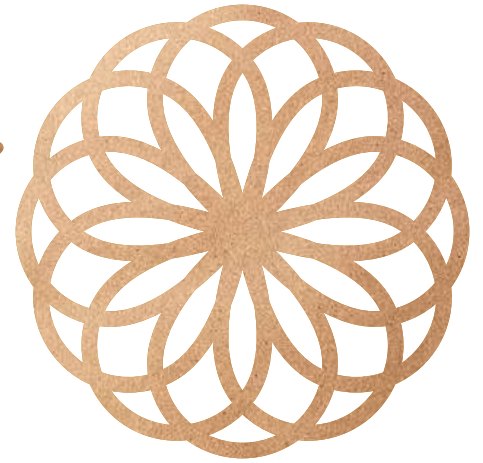
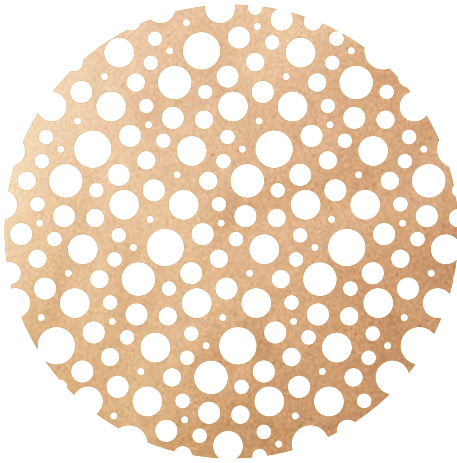




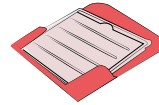


*Mono shape*




  
Moddecor  
*Golden Touch*



1 conf.= 12pz x 8 fogli  
1 pack = 12pcs x 8 sheets



**New pack**

**31422** **NEW** - ■■■ 3 - cm: Ø5,7 pz: 96 -   

*Nuovo pack in vaschetta*  
Facilita' di utilizzo e sicurezza

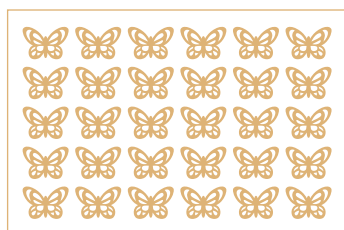


*New packaging in tray - Enhanced usability and safety*



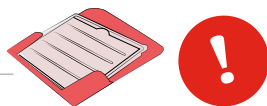


# Mono shape



L3,8xH2,7cm

CODICE	PZ			
<b>31425</b> <small>NEW</small>	240 (30pz x 8 fogli)	●	●	●
<b>31415</b>	360 (30pz x 12 fogli)	●	●	●

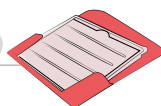


New pack

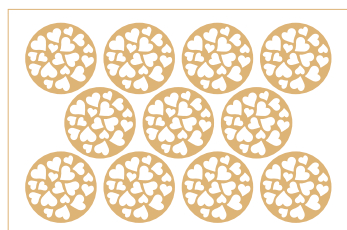


L3,8xH3,3cm

CODICE	PZ			
<b>31424</b> <small>NEW</small>	240 (30pz x 8 fogli)	●	●	●
<b>31414</b>	360 (30pz x 12 fogli)	●	●	●



New pack



CODICE	PZ			
<b>31420</b> <small>NEW</small>	88 (11pz x 8 fogli)	●	●	●
<b>31410</b>	132 (11pz x 12 fogli)	●	●	●

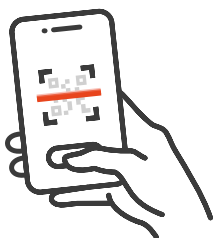
Per utilizzare al meglio **Golden Touch** è importante seguire le seguenti istruzioni:

*To get the best results with our Golden Touch, follow these instructions:*

1

Prima dell'utilizzo assicurarsi di avere le mani perfettamente asciutte o indossare guanti.

*Before use, make sure your hands are completely dry or wear gloves.*



**GUARDA IL VIDEO**  
WATCH THE VIDEO

2

Golden Touch presenta due lati distinti: uno luminoso e brillante, l'altro leggermente più ruvido.

Si raccomanda di posizionare il lato ruvido a contatto con la superficie del dolce desiderato, in modo da esaltare al meglio la sua lucentezza.

*Our Golden Touch has two different aspects: one shiny and glossy, and the other slightly rougher.*

*It's recommended to place the rough side against the surface of your dessert to best enhance its shine.*

# Nuova polvere glitter colorata

New colour glitter powder

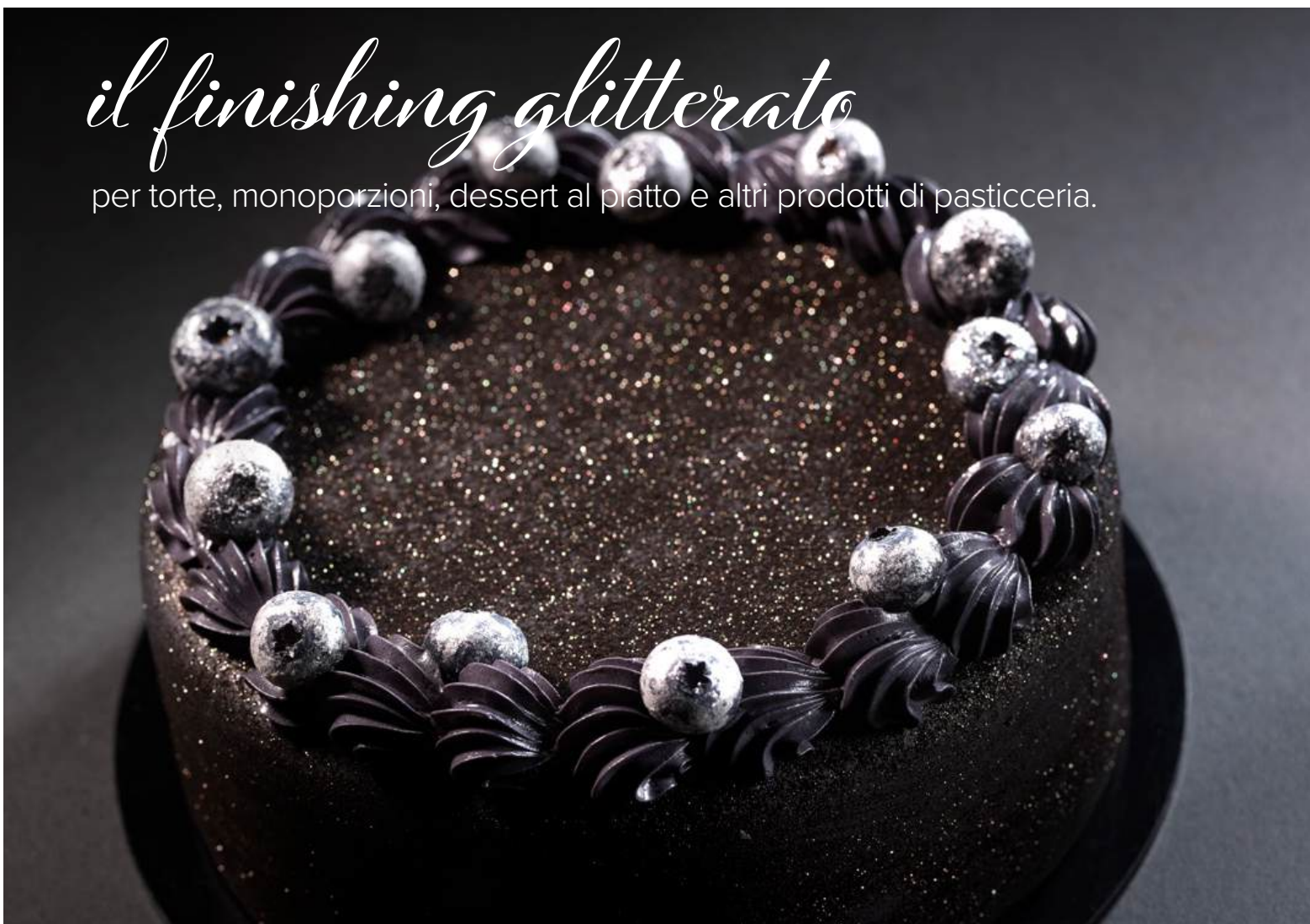


60 / GOLDEN TOUCH / Golden Touch



## *il finishing glitterato*

per torte, monoporzioni, dessert al piatto e altri prodotti di pasticceria.



*For a glittering finish on cakes, single portions, plated desserts, and other pastry products.*



GLITTER Touch  
ORO  
gold

40g



Il **pratico dispenser** rende l'applicazione semplice e immediata, per illuminare ogni preparazione

The handy dispenser allows a quick and easy application, bringing a touch of shine to every creation.

**23358** - pz: 1 (40g)  

GLITTER Touch  
ROSSA  
red

40g



**23359** -  



GLITTER Touch  
ARGENTO  
silver



23378 NEW - AZO GF



GLITTER Touch  
ROSA  
pink



23379 NEW - AZO GF



GLITTER Touch  
AZZURRA  
light blue



23380 NEW - AZO GF



GLITTER Touch  
NERA  
black



30g

23381 NEW  
pz: 1 (30g) AZO GF

# CREAMart



la soluzione che dà forma  
e colore alle tue torte di *tendenza!*  
*the solution that gives shape and colour to your trendy cakes!*

La linea **CreamArt** garantisce massima **stabilità**, **volume** impeccabile e **colori** intensi: le performance ideali per realizzare con facilità tutte le torte di tendenza

*The CreamArt line guarantees maximum stability, impeccable volume and intense colours: the ideal performance for easily creating all the latest cake trends.*

FILL!

# FARCISCI!



SCRIVI!

WRITE!



DECORATE!

DECORA!



RIVESTI!

COAT!





# CREAMart

**CreamArt colorato:** dona alle tue torte uno stile deciso, elegante e perfettamente fotografabile.

*Coloured CreamArt: give your cakes a strong, elegant and perfectly photogenic style.*



- **CreamArt Nero e CreamArt Rosso Borgogna** sono ideali per torte d'impatto: perfetti per creazioni moderne, Lambeth dark, lettering ad alto contrasto e cake design grafico.
- **Black CreamArt and Burgundy Red CreamArt** are ideal for impactful cakes: perfect for modern creations, Lambeth dark, high-contrast lettering and graphic cake design.

## NERO



il colore che dà  
*carattere*  
alle tue creazioni

**Black CreamArt,**  
*the colour that gives  
character to your creations*

**31279** **NEW** - kg: 1 - pz: 1 -  

- **Il semilavorato in polvere già pigmentato**, una volta idratato e montato, diventa una crema stabile dal colore pieno, profondo e immediatamente uniforme, senza necessità di aggiungere altri coloranti.

- *Once hydrated and whipped, the **pre-pigmented powder semi-finished product** becomes a stable cream with a full, deep and immediately uniform colour, without the need to add other colourants.*

- **Le stesse performance del CreamArt neutro sono garantite:** stabilità, volume e cremosità invariati per una lavorazione semplice e precisa, ideale per piping, bordature e decorazioni strutturate.

- *The same performance of neutral CreamArt is guaranteed: stability, volume and creamy texture remain unchanged for simple and precise processing, ideal for piping, edging and structured decorations.*

CreamArt un prodotto  
*infinite possibilità!*  
CreamArt one product endless possibilities

## ROSSO BORGOGNA



il rosso intenso e  
*s sofisticato*  
che valorizza  
ogni dettaglio

**Burgundy Red CreamArt**,  
the intense, sophisticated red  
that enhances every detail

**31282** NEW - kg: 1 - pz: 1 - GF

# CREAMart



**CreamArt Neutro** è il tuo alleato ideale per dare vita a torte uniche e spettacolari grazie alla combinazione perfetta con la linea di colori alimentari **ColorGel!**



*CreamArt Neutral is your ideal ally for creating unique and spectacular cakes thanks to its perfect combination with the ColorGel line of food colourings!*



## Scopri come esprimere al meglio la tua *creatività!*

*Discover how to express at the best your creativity*



- **Pronta all'uso:** semplice e facile da reidratare e montare.
- **Facile da lavorare:** la sua cremosità garantisce una stesura precisa e uniforme, ideale per realizzare decorazioni e scritte sia con sac à poche che con cornetto in carta.
- **Ready to use:** simple and quick to rehydrate and whip
- **Easy to work with:** its creamy texture ensures precise and even application, ideal for creating decorations and lettering using either a piping bag or a paper cone.

**31257** - kg: 1,8 - pz: 4 -  

**31257P** - kg: 1,8 - pz: 1 -  



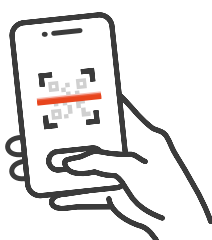
- **Colori brillanti e saturi\***: per risultati visivi accattivanti e professionali, ottenuti grazie alla sua perfetta complementarità con la linea di colori alimentari ColorGel.
- **Fino a 72 ore** in frigorifero senza alterazioni di struttura e colore
- **Ideale per la personalizzazione\***: il gusto può essere caratterizzato utilizzando le principali paste aromatizzanti per gelateria e pasticceria.

- **Bright, saturated colours\***: for eye-catching, professional results, achieved thanks to its perfect compatibility with the ColorGel range of food colours.
- **Up to 72 hours** in the refrigerator, with no structure and colour alterations
- **Ideal for customisation\***: the flavour can be characterized using the main flavouring pastes for ice cream and pastries.



\* Segui le istruzioni ideali di utilizzo riportate nell'How to Use.

\* Follow the ideal usage instructions outlined in the "How to use" section.



GUARDA IL VIDEO  
WATCH THE VIDEO





# Glassa lucida spray pronta all'uso

Ready-to-use glossy spray glaze • Gotowa do użycia błyszcząca polewa w sprayu  
Gebrauchsfertige glänzende Sprühglasur • Glaseado brillante en spray listo para usar  
Glaseado brillante en spray listo para usar

Ideale per donare luminosità ai tuoi dolci in poco tempo, perfetta per glassare le tue creazioni a temperatura sia positiva che negativa.

Ideal for adding shine to your desserts in no time, perfect for glazing your creations at both positive and negative temperatures.

Idealna do szybkiego nadania blasku deserom, idealna do glazurowania w temperaturach dodatnich i ujemnych.

Ideal, um deinen Süßspeisen schnell Glanz zu verleihen, perfekt zum Glasieren deiner Kreationen bei sowohl positiver als auch negativer Temperatur.

Ideal para dar brillo a tus postres en poco tiempo, perfecta para glasear tus creaciones tanto a temperatura positiva como negativa.

Ideal para dar brillo a tus postres en poco tiempo, perfecta para glasear tus creaciones tanto a temperatura positiva como negativa.



## Facile da usare: riuscita professionale anche sulle superfici più irregolari

Easy to use: professional results even on the most irregular surfaces.



280g

CODICE	COLORE	AZO	GF
<b>23395</b> NEW	ROSSA		
<b>23396</b> NEW	GIALLA		
<b>23397</b> NEW	TRASPARENTE		

g: 280 - pz: 1



# INFORMAZIONI PRODOTTO

Product information | Informacje o produkcie | Produktinformationen | Informaciones sobre el producto | Informações sobre o produto

	Italiano	English	Polski	Deutsch	Español	Português
1234	Codice art.	Item Code	Kod produktu	Artikel Nummer	Código	Código
<b>NEW</b>	Cod art. Nuovo	New Item code	Nowy kod produktu	Neuer Artikel	Código Nuevo	Código novo
1234	Articoli disponibili fino ad esaurimento scorte	Products available while stocks last	Produkty dostępne jedynie do wyczerpania zapasów	Artikel verfügbar bis zur Erschöpfung der Bestände	Artículos disponibles hasta agotar stock	Artigos disponíveis até esgotar o stock
<b>switch</b> ⇨	Nuovo codice al termine della giacenza del codice attuale	New code when the current code is out of stock	Nowy kod dostępny po wyprzedaniu aktualnego kodu	Neuer Code nach Erschöpfung des aktuellen Bestands	Nuevo código una vez agotado el stock del código actual	Novo código após o término da existência do código atual
●●●	Colori	Colours	Kolory	Farben	Colores	Cores
■ ■ ■	Modelli	Models	Modele	Modelle	Modelos	Modelos
cm:	Altezza e larghezza	Height and width	Wysokość i szerokość	Höhe und Breite	Altura y anchura	Altura e largura
∅	Diametro	Diameter	Średnica	Durchmesser	Diámetro	Diâmetro
pz:	Pezzi per confezione	Pieces per box	Sztuk w opakowaniu	Stück pro Ve.	Piezas por caja	Peças por caixa
mat:	Materiale	Materials	Materiał	Material	Materiales	Materiais
g	Il peso indicato per i prodotti in cioccolato non ha valenza metrologica	The weight indicated for chocolate products has no metrological value	Waga wskazana dla produktów czekoladowych nie ma wartości metrologicznej	Das für Schokoladenerzeugnisse angegebene Gewicht hat keinen messtechnischen Wert.	El peso indicado para los productos de chocolate no tiene valor metrológico	O peso indicado para os produtos de chocolate não tem valor metrológico

~	Circa	Around	Okolo	Ungefähr	Alrededor de	Mais ou menos
1:1	la dimensione del prodotto equivale a quella dell'immagine riportata	The size of the product is the same as the shown image	Wymiary produktu są takie same jak na zdjęciu	Das Produkt ist in der tatsächlichen Größe abgebildet	El tamaño del producto, equivale al de la imagen	O tamanho do artigo é igual ao da imagem
GF	Senza glutine	Gluten free	Bezglutenowe	Glutenfrei	Sin gluten	Sem glúten
AZO	Senza coloranti azoici aggiunti	No Azo colorants added	Bez barwników AZO	Ohne Zusatz von Azofarbstoffen	Sin colorantes azoicos añadidos	Sem corantes azóicos adicionados
☞	I prodotti che presentano questa icona sono resistenti alla condensa.	Products with this icon are resistant to condensation.	Produkty z tą ikoną są odporne na kondensację.	Produkte mit diesem Symbol sind kondensationsfest.	Los productos que presentan este símbolo, son resistentes a la condensación.	Os produtos com este ícone são resistentes à condensação.
☆	I prodotti che presentano il simbolo ☆ sono in materiale atto al contatto alimenti, non edibile.	Products with the ☆ symbol are in food safe material, not edible.	Produkty oznaczone symbolem ☆ są wykonane z materiału przeznaczanego do kontaktu z żywnością, niejadalnego.	Produkte, die mit dem Symbol ☆ gekennzeichnet sind, bestehen aus nicht essbaren Materialien, sind aber für den Kontakt mit Lebensmitteln geeignet.	Los productos que tienen el símbolo ☆ están hechos de material apto para el contacto con alimentos, no comestibles.	Os produtos com o símbolo ☆ são produzidos com material apropriado para entrar em contato com alimentos, não são comestíveis.
⊙	Isolare la base del soggetto con pellicola alimentare prima di posizionarlo sulla superficie della torta.	Isolate the base of the subject with food film before placing on the cake or dessert.	Podstawa produktu powinna zostać oddzielona od tortu lub deseru folią spożywczą.	Isolieren Sie den Boden des Motivs mit Lebensmittelfolie, bevor Sie es auf die Tortenoberfläche legen.	Aísle la base de la figura con film transparente antes de colocarlo en la superficie del pastel.	Isolar a base do modelo com película alimentar antes de o posicionar na superfície do bolo.



Scansiona il QR Code per vedere il video del prodotto

Scannen Sie den QR-Code, um das Produktvideo

Scan the QR Code to view the product video

Escanear el Código QR para ver el video del producto

Zeskanuj kod QR aby wyświetlić video produktu

Digitalizar o Código QR para visualizar o video do produto


# COLORI

Colours | Colores | Farben | Cores | Cores

	Italiano	English	Polski	Deutsch	Español	Português
A	Assortito (col./conf.)	Assorted (col./box)	Asortyment mieszany (kolor/op.)	Sortiert (Farbe/Verp.)	Surtido (col./caja)	Sortido (cor/caixa)
B	Rosa - Femmina	Pink - Female	Różowy - żeński	Rosa - Mädchen	Rosa - Niña	Rosa - menina
C	Celeste - Maschio	Light-blue - Male	Jasno-niebieski - męski	Hellblau - Junge	Celeste - Niño	Azul - menino
E	Giallo	Yellow	Żółty	Gelb	Amarillo	Amarelo
G	Bianco	White	Biały	Weiß	Blanco	Branco
L	Verde	Green	Zielony	Grün	Verde	Verde
N	Marrone	Brown	Brązowy	Braun	Marrón	Castanho
Z	Nero	Black	Czarny	Schwarz	Negro	Preto

# ABBREVIAZIONI MATERIALI

Abbreviations of materials | Skróty materiałów | Materialabkürzungen | Abreviaciones de los materiales | Abreviações dos Materiais

	Italiano	English	Polski	Deutsch	Español	Português
AM	Amido	Starch	Skrobia	Stärke	Almidón	Amido
	Cioccolato bianco	White chocolate	Czekolada biała	Weiße Schokolade	Chocolate blanco	Chocolate branco
GE	Gélee	Jelly	Produkt żelowy	Gelatine	Gelatina	Gelatina
PF	Prodotto da forno	Bakery wares	Wyroby piekarnicze	Backwaren	Productos para hornear	Produtos cozidos no forno
PL	Plastica	Plastic	Plastik	Plastik	Plástico	Plástico
SURR. BCO	Decorazioni in blister al gusto di cioccolato bianco	White chocolate-flavored decorations in blister packs	Dekoracje z białej czekolady w blisterach	Dekorationen mit weißem Schokoladengeschmack in Blisterpackungen	Decoraciones en blister, con sabor a chocolate blanco	Decorações em blister, com sabor a chocolate branco
ZU	Zucchero	Sugar	Cukier	Zucker	Azúcar	Açúcar

# SIMBOLI E ABBREVIAZIONI

Symbols and abbreviations | Symboles et abréviations | Symbole und Abkürzungen | Símbolos y abreviaciones | Símbolos e abreviações



Pasta di zucchero | Sugar paste  
Masa cukrowa | Fondant  
Fondant | Pasta de açúcar



In sacchetto trasparente | In transparent bag  
w przezroczystym woreczku | In durchsichtige Tüte  
En bolsa transparente | Em bolsa transparente



In blister appendibile | In blister pack with hanging slot | W opakowaniu typu blister, z otworem do zawieszania  
In Verpackung zum Aufhängen | En blister colgante | Em blister de pendurar

Realizzato e prodotto da Modacor Italiana S.r.l. - Cuvio (VA)  
Copyright © Modacor Italiana S.r.l.  
Tutti i diritti sono riservati.  
Nessuna parte di questo catalogo può essere riprodotta o trasmessa in nessun modo, senza un'autorizzazione scritta e concessa da parte di Modacor Italiana S.r.l.  
Modacor è un marchio registrato

Made and produced by Modacor Italiana S.r.l. - Cuvio (VA)  
Copyright © Modacor Italiana S.r.l.  
All rights reserved.  
No part of this catalogue can be copied or transmitted in any way, without written authorization by Modacor Italiana S.r.l.  
Modacor is a registered trademark

Réalisé par Modacor Italiana S.r.l. - Cuvio (VA)  
Copyright © Modacor Italiana S.r.l.  
Tous droits réservés. Aucune partie du présent catalogue ne peut être reproduite ou transmise en aucune manière, sans autorisation écrite et accordée par Modacor Italiana S.r.l.  
Modacor est une marque déposée

Entwickelt und produziert von Modacor Italiana S.r.l. - Cuvio (VA)  
Markenschutz © Modacor Italiana S.r.l.  
Alle Rechte vorbehalten  
Kein Teil dieses Katalogs darf ohne schriftliche Erlaubnis von Modacor Italiana S.r.l. auf irgendeine Art und Weise kopiert oder übertragen werden.  
"Modacor" ist ein eingetragenes Markenzeichen

Realizado y fabricado por Modacor Italiana S.r.l. - Cuvio (VA)  
Copyright © Modacor Italiana S.r.l.  
Quedan reservados todos los derechos.  
Ninguna parte de este catálogo puede ser reproducida o transmitida sin autorización escrita de Modacor Italiana S.r.l.  
Modacor es una marca registrada

Realizado e produzido por Modacor Italiana S.r.l. - Cuvio (VA)  
Copyright © Modacor Italiana S.r.l.  
Direitos Reservados  
Nenhuma parte deste catálogo pode ser reproduzida ou transmitida sem autorização escrita da Modacor Italiana S.r.l.  
Modacor é uma marca registrada

Le immagini hanno il solo scopo di rappresentare i prodotti. Il colore del prodotto può presentare leggere variazioni dovute alle caratteristiche delle materie prime utilizzate. Tutte le fotografie di questo catalogo sono di proprietà di Modacor Italiana S.r.l.

The images are only intended to represent the products. The colour of the product may slightly vary due to the characteristics of the raw materials used. All pictures inside this catalogue are owned by Modacor Italiana S.r.l.

Les images sont uniquement destinées à représenter les produits. La couleur du produit peut varier légèrement en raison des caractéristiques des matières premières utilisées. Tous les visuels de ce catalogue appartiennent à Modacor Italiana S.r.l.

Die Bilder sind nur dazu bestimmt, die Produkte darstellen. Die Farbe des Produkts kann aufgrund der Eigenschaften der verwendeten Rohstoffe leicht variieren. Alle enthaltenen Bilder im Katalog sind Eigentum von Modacor Italiana S.r.l.

Las imágenes sólo pretenden representar los productos. El color del producto puede presentar ligeras variaciones debidas a las características de las materias primas utilizadas. Todas las fotos de este catálogo, son de propiedad de Modacor Italiana S.r.l.

As imagens são destinados apenas para representar os produtos. A cor do produto pode apresentar ligeiras variações devido às características das matérias-primas utilizadas. Todas as fotos do catálogo, são da propriedade da Modacor Italiana S.r.l.



® Moddecor Italiana S.r.l.  
Via Gino Maggi 2  
21030 Cuvio (VA) IT  
Tel: +39 0332 658 311  
FAX: +39 0332 651 135



[moddecor@moddecor.it](mailto:moddecor@moddecor.it)  
[www.moddecoritaliana.it](http://www.moddecoritaliana.it)

